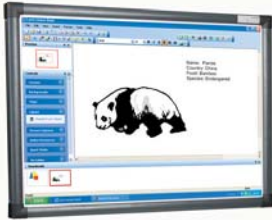


**ΤΥΠΟΣ**
**ΤΕΧΝΙΚΑ ΧΑΡΑΚΤΗΡΙΣΤΙΚΑ**
**ΤΙΜΗ**
**Clever Pro Touch**
**ΑΝΕΥ ΦΠΑ**
**70" CleverTouch**


Simply connect the CleverTouch to a PC and projector for a complete interactive system which responds to touch for annotation and application navigation. The projected images, complete with your notes and annotations can then be captured and stored for electronic or hard copy distribution. Features include:

- Robust touch resistant surface using the latest technology
  - Full functionality with just your finger or supplied stylus
  - Comes with wall mounting kit, but can be stand mounted
  - Optional stand available (1020004)
  - Surface can be used with dry-wipe marker pens
- 1167x1634x70mm (HxWxD), Weight 25kg


**Stand for CleverTouch**


CleverTouch™ can be securely mounted on an adjustable stand for greater ease of use. Simple turn wheels allow the height to be varied to enable everyone from children to adults to use CleverTouch™ comfortably. Robust tubular steel construction  
Lockable castors. Height variable through 16 inches


**CleverBoard**
**CleverBoard 3 72"**


Uses a brand new interactive pen design to dramatically improve performance  
Lynx capture technology  
USB 2.0 connections  
Secure lockable cabinets  
Lifetime guarantee on board surface  
Can be used like any dry-wipe board  
Overall dimensions (doors closed) 1801 x 1220 x 100mm (WxHxD)  
Overall dimensions (doors open) 2331x 1220 x 100mm (WxHxD)  
Working area 1478 x 1168mm (WxH), Weight: 40kg


**Stand for 72" CleverBoard 3**


CleverBoard™ can be securely mounted on an adjustable stand for greater ease of use. Simple turn wheels allow the height to be varied to enable everyone from children to adults to use CleverBoard™ comfortably. Robust tubular steel construction  
Lockable castors. Height variable through 16 inches


**Ink Capture Pack**


Record your CleverBoard activity. Capture your notes on your PC or laptop. Review a CleverBoard session by playing back your notes. Attach your board or series of boards to your on-line printer(s). Export your CleverBoard session in a variety of formats, such as JPEG, Bitmaps, Metafiles & HTML. Drag and drop whiteboard images into popular Windows applications  
Ink capture now fully integrated into Lynx software  
This pack contains:  
2 Interactive stylus with four interchangeable coloured ends  
4 coloured expo markers  
Interactive eraser

